

Att stödja praktikernas kompetensutveckling

Välkomna

<https://www.youtube.com/watch?v=6aKNK7OTHKs>

A Japanese proverb...found in a temple

When you are young, you fight vigorously to carry out your projects and dreams, you think you can conquer the world on your own. But when you get older, you think about everything you have done and realize that everything you have achieved in your life has been thanks to the people around you.





<http://www.youtube.com/watch?v=E8umFV69fNg>

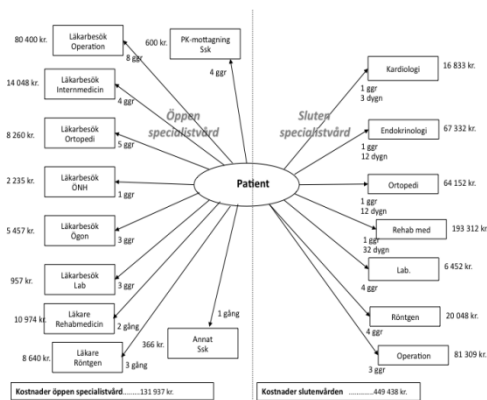
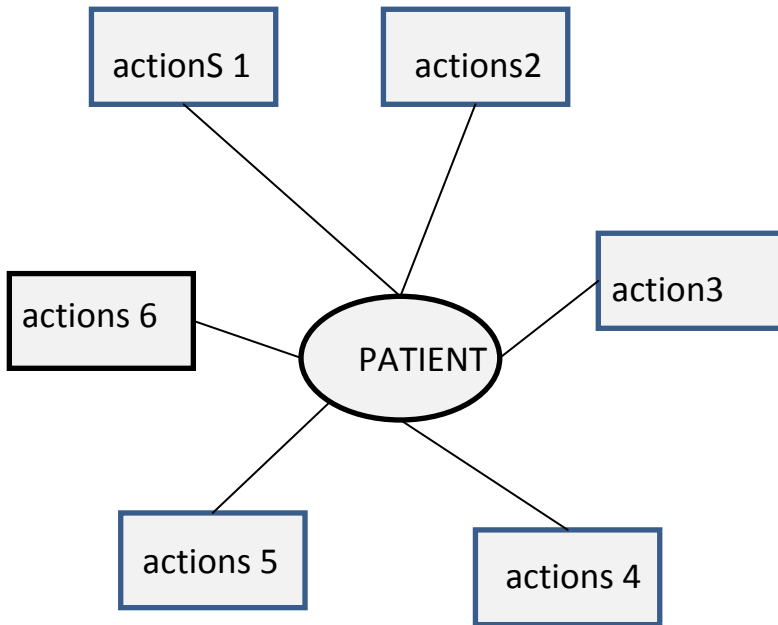
(4:16)

Ref Stephen Swensen

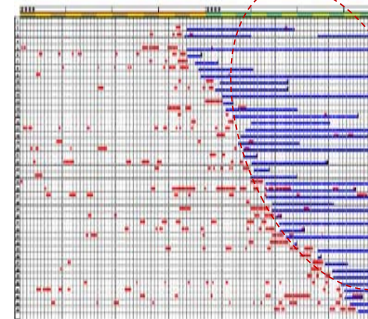
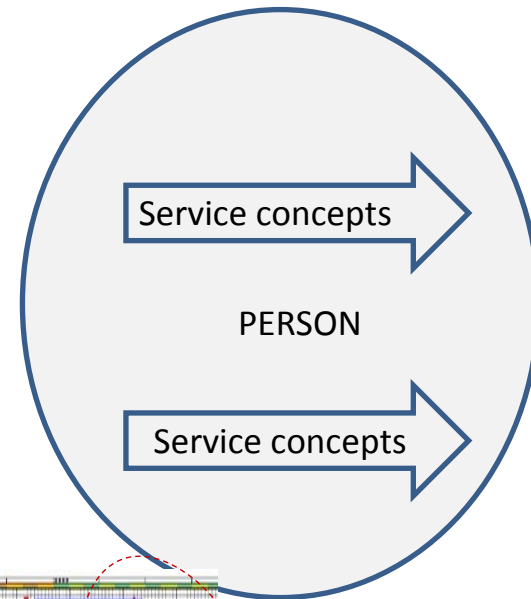


Paradigm shift: From input management to individuals management

Input orientation

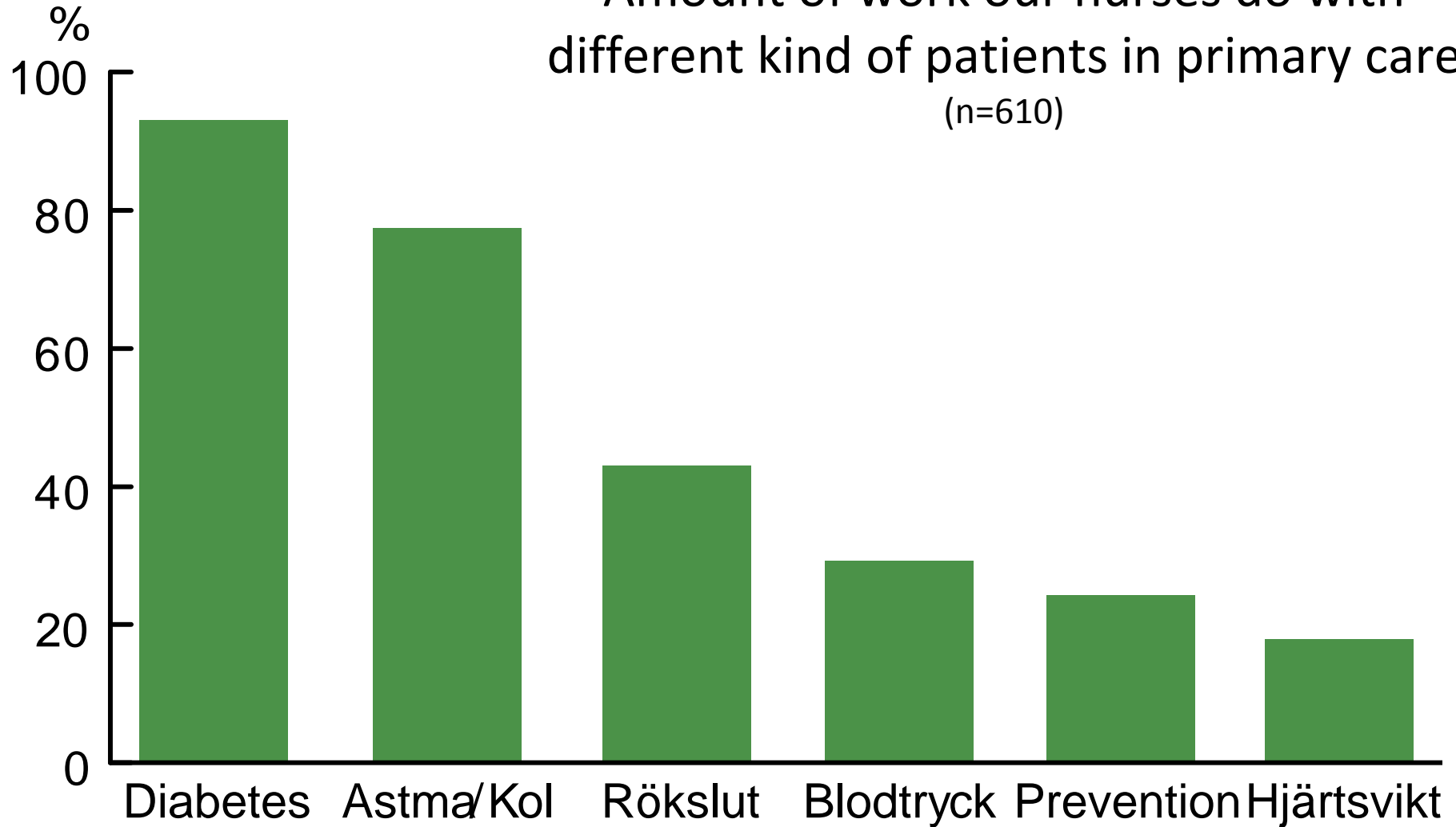


Management of person orientation

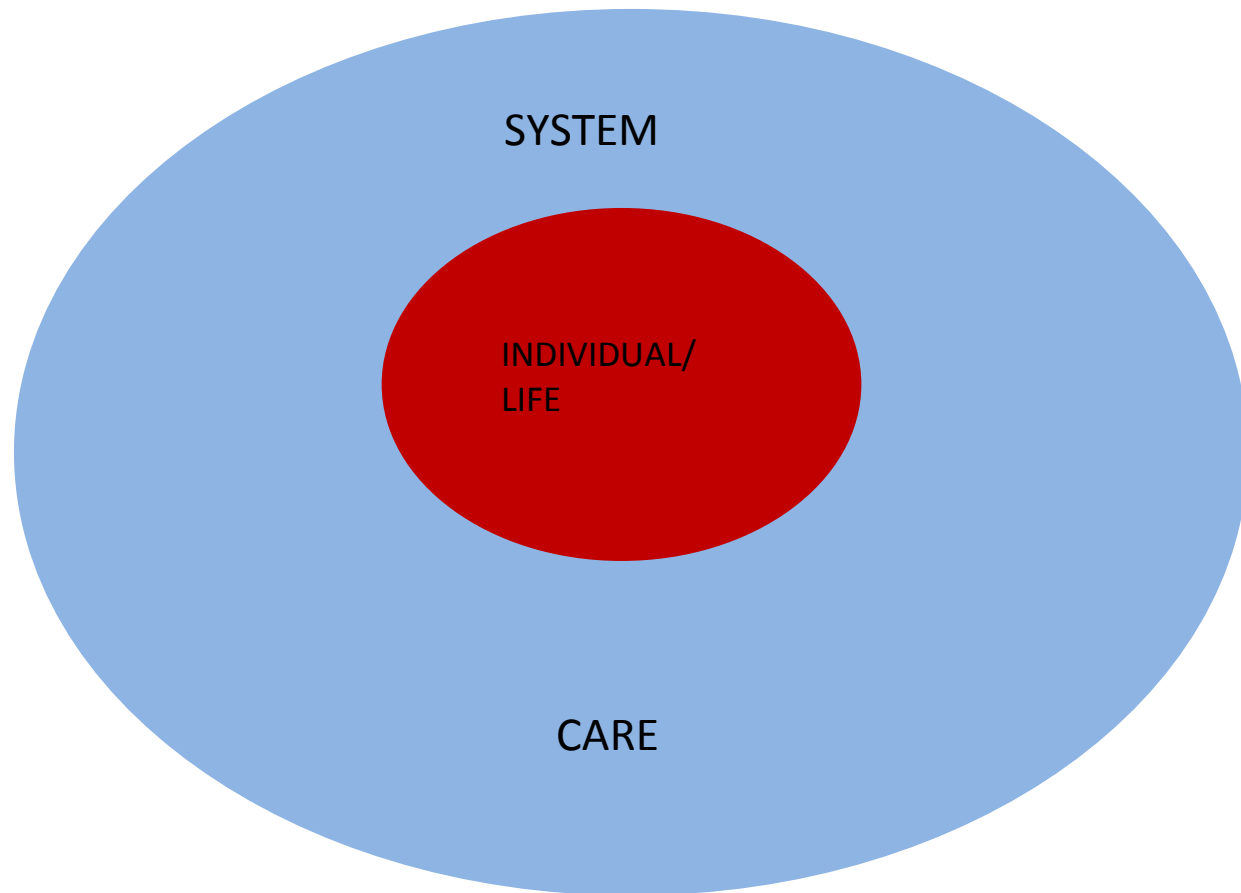


A screenshot of a patient management interface. It features a navigation bar with buttons for 'Förtyggande', 'Behov uppdat', 'Första kontakt', 'Utredning', 'Beslut om åtgärd', 'Behandling', and 'Uppföljning'. Below the navigation bar, there are several text boxes and icons. One text box explains that red flags indicate a need for a process review. Another text box describes the breast cancer process. On the right side, there are vertical navigation buttons for 'Min vårdplan i åtg', 'Patient involvering', 'Patient information', 'Säkerhets- och kvalitetsförbättringsarbete', 'Mått i Carenet', and 'Resultat- och utvärdering (RKA)'.

Amount of work our nurses do with
different kind of patients in primary care
(n=610)



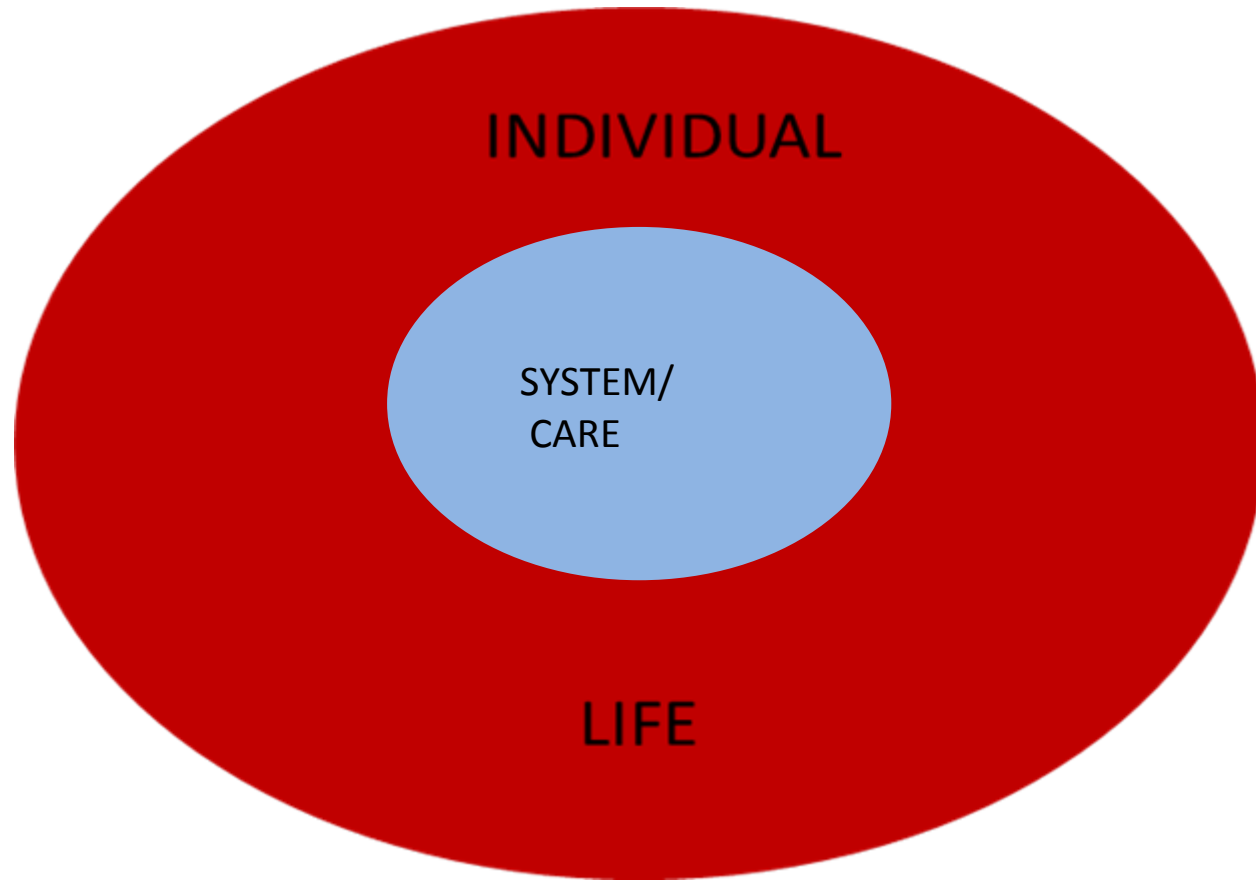
Why change: The old Mindset



Management ambition...

First the organization and then the individual

New mindset



Promote the individual and also the team/process

Health and Care:

The new agenda

